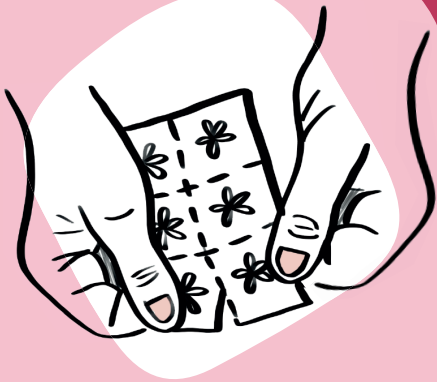
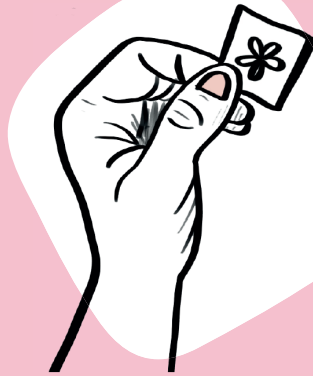




SAFE ABORTION WITH MISOPROSTOL



Tear the **Misoprostol** card into **6 squares** along the printed lines.



Each square contains **400 mcg of Misoprostol** and has a flower illustration on one side.



Use **2 squares buccally**, one on each side of the mouth (between gum and cheek): with the **printed side facing the cheek**.



1 DOSE

Place 2 squares (800 mcg) in the mouth, one square on each side of the mouth. Leave in place for at least 30 minutes. You can swallow or spit out any remaining paper. Wait 3 hours.

2 DOSE

Take another 2 squares (800 mcg) the same way. Leave for 30 minutes, then swallow or spit out the remains. Wait 3 hours.

3 DOSE

Take the final 2 squares (800 mcg) the same way. Leave for 30 minutes. Then swallow or spit out the remains.

